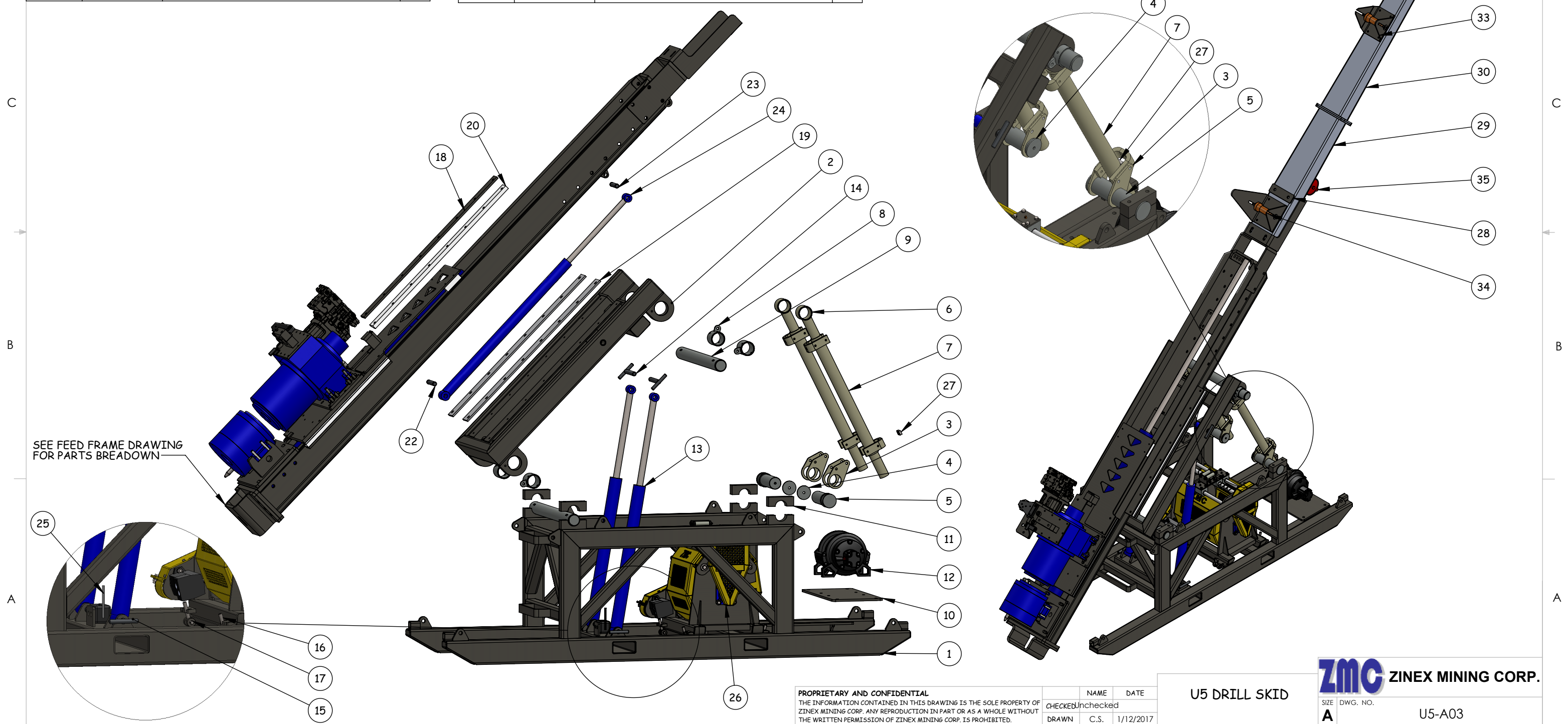


ITEM NO.	PART NUMBER	DESCRIPTION	QTY.
1	U5-001-A01	U5 MAIN SKID	1
2	U5-002-A01	U5 SUB FRAME	1
3	U5-011-001	U5 STIFF LEG MOUNT PLATE	4
4	U5-011-002	U5 STIFF LEG MOUNT SHAFT CAP	2
5	U5-011-003	U5 STIFF LEG MOUNT SHAFT	2
6	U5-011-A01	U5 INNER STIFF LEG WELDMENT	2
7	U5-011-A02	U5 OUTER STIFF LEG WELDMENT	2
8	U5-007-A01	U5 LARGE PIVOT BUSHING	4
9	U5-002-A02	SUBFRAME CONNECTION PIVOT PIPE	2
10	U5-001-020	HOIST WINCH MOUNT PLATE	1
11	A5-004-018	CYLINDER MOUNTING BLOCK - DRILLED	4
12	A5-075-015	ROTZLER HOIST WINCH	1

ITEM NO.	PART NUMBER	DESCRIPTION	QTY.
13	U5-080-002	HOIST CYLINDER - 25 MAL 32-10	2
14	U5-007-A03	HOIST CYLINDER PIN - LONG	2
15	U5-007-A04	HOIST CYLINDER PIN - SHORT	2
16	A5-007-007	SWING BOLT	4
17	A5-007-006	SWING BOLT PIN	4
18	U5-002-002	SUB FRAME TO FEED FRAME MOUNT PLATE	2
19	U5-006-007	FEED FRAME SLIDE UHMW	2
20	U5-006-008	FEED FRAME CLAMPING UHMW	2
21	U5-A02	U5 FEED FRAME COMPLETE ASSEMBLY	1
22	U5-007-001	MAST DUMP CYLINDER PIN - LONG	1
23	U5-007-002	MAST DUMP CYLINDER PIN - SHORT	1
24	U5-080-001	MAST DUMP CYLINDER - 20 MAL 40-10	1

ITEM NO.	PART NUMBER	DESCRIPTION	QTY.
25	U5-080-004	DUMP/HOIST VALVE - DH5/6B-SAE	1
26	LW5-A03	ZINEX LEVELWIND WINCH	1
27	A5-010-A05	STIFF LEG CARBIDE INSERT	1
28	A5-005-010	STINGER WASHER PLATE	2
29	U5-009-A01	U5 STINGER BOTTOM SECTION	1
30	U5-009-A02	U5 STINGER MID SECTION	1
31	U5-009-A03	U5 STINGER TOP SECTION	1
32	U5-008-A01	U5 SHEAVE ASSEMBLY	1
33	A5-008-A02	SMALL ROD GUIDE ASSEMBLY	1
34	A5-008-A03	LARGE ROD GUIDE ASSEMBLY	1
35	A5-075-007	5" SHEAVE BLOCK	1



SEE FEED FRAME DRAWING FOR PARTS BREAKDOWN

PROPRIETARY AND CONFIDENTIAL
 THE INFORMATION CONTAINED IN THIS DRAWING IS THE SOLE PROPERTY OF ZINEX MINING CORP. ANY REPRODUCTION IN PART OR AS A WHOLE WITHOUT THE WRITTEN PERMISSION OF ZINEX MINING CORP. IS PROHIBITED.

CHECKED	NAME	DATE
UNCHECKED		
DRAWN	C.S.	1/12/2017

U5 DRILL SKID

ZMC ZINEX MINING CORP.
 SIZE DWG. NO.
A U5-A03