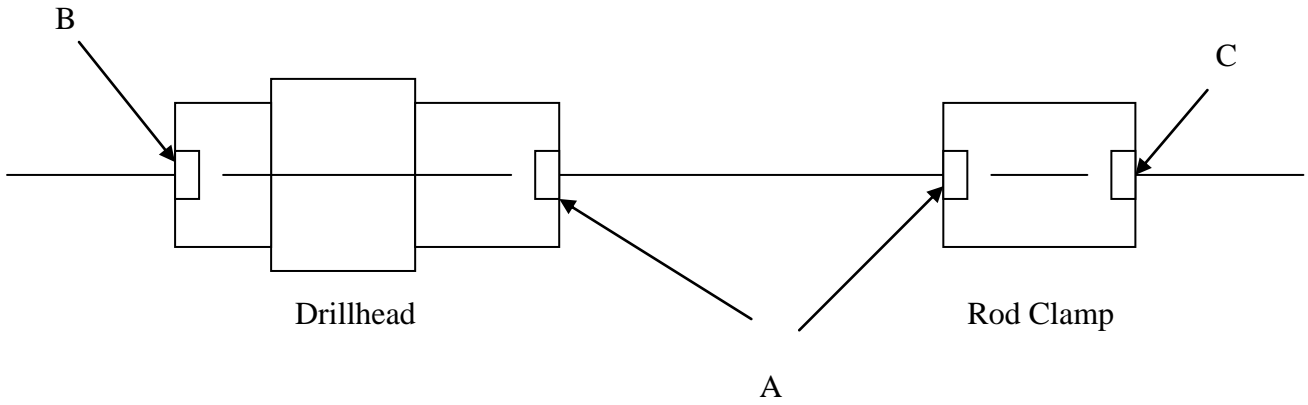


## Jaw Sets and Bushings Chart



*12.5 Degree = 3Holes*

*7 Degree = 2Holes*

### 18120001                      18120002 Standard "H" Chuck and "H" Clamp Assemblies

	Jaw Set * (12.5 degrees)	Chuck Bushing (A)	Spindle Bushing (B)	Clamp Bushing (C)	Jaw Set ** (7 degrees)
A Rod	18100620				
B Rod	18100012	18100068	18100186	18100203	18100136
BTW Rod	18100637	18100068	18100186	18100203	
N Rod	18100135	18100153	18100187	18100205	18100138
B Casing	18100134	18100206	18100188	18100204	18100137
H Rod / N Casing	18100145	18100154	none	18100383	18100139
HTW Rod (3.583")	18180060				

\* Each jaw set requires 2 – 18100194 Jaw Retaining Rings and 18 – 18150003 Carbide Inserts

\*\* Each jaw set requires 2 – 18100207 Jaw Retaining Rings and 18 – 18150003 Carbide Inserts

### 18120006 "P" Clamp Assemblies

	Jaw Set * (12.5 degrees)	Clamp Bushing (A and C)	Bearing / Bushing Kit
A Rod	18180059		
B Rod	18100174	18100180	18100607
BTW Rod (2.225")	18100638	18100180	
NWJ Rod (2.625")	18180065		
N Rod	18100176	18100182	18100606
B Casing	18100175	18100181	
H Rod / N Casing	18100177	18100184	18100605
HTW Rod (3.583")	18180066		
P Rod / H Casing	18100178 **	18100185	18100602

\* Each jaw set (except P Rod) requires 2 – 18100208 Jaw Retaining Rings and 18 – 18150003 Carbide Inserts

\*\*P Rod jaw set requires 1 – 18100209 and 1 – 18100484 Jaw Retaining Ring

2 clamp bushings are required per rod clamp assembly

## Jaw Sets and Bushings Chart

### 18120017 “P” Chuck Assemblies

	Jaw Set * (12.5 degrees)	Chuck Bushing (A)	Spindle Bushing (B)
A Rod	18180068		
B Rod	18100481	18100482	18100615
NWJ Rod (2.625")	18180089		
N Rod	18100475	18100478	18100581
B Casing	18100632		
H Rod / N Casing	18100476	18100479	18100582
P Rod / H Casing	18100477	18100480	

\* Each jaw set requires 2 – 18100483 Jaw Retaining Rings and 18 – 18150003 Carbide Inserts